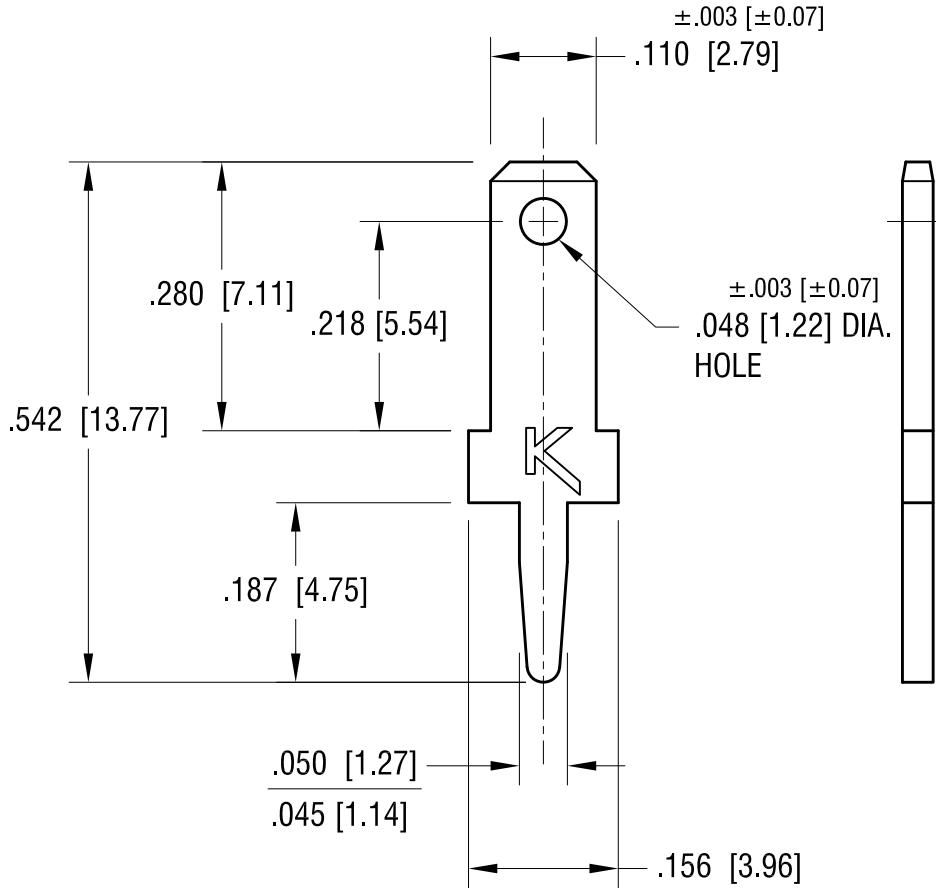


THIS DOCUMENT IS THE PROPERTY OF
KEYSTONE ELECTRONICS CORP. AND
SHALL NOT BE REPRODUCED, DISTRIBUTED
OR USED AS A BASIS FOR MANUFACTURE
WITHOUT PRIOR WRITTEN PERMISSION
FROM KEYSTONE ELECTRONICS CORP.

ACTUAL SIZE



NOTE:
MOUNTING HOLE SIZE:
.052 [1.32] DIA.

| | | |
|----------|--------------------------|------|
| 8.21.12 | CHANGE AS PER ECN 12-109 | C |
| 6.16.09 | CHANGE AS PER ECN 09-071 | B |
| 12.14.98 | CHANGE AS PER ECR 98-088 | A |
| DATE | DESCRIPTION | REV. |

| | | | |
|---|-----------------|--------|-------------|
| KEYSTONE ELECTRONICS CORP. | | | |
| www.keyelco.com • ASTORIA, N.Y. 11105-2017 • Tel (718) 956-8900 | | | |
| PART NAME | | | |
| .110 PC QUICK-FIT TERMINAL | | | |
| MATERIAL | | | |
| .032 [0.81] TH'K BRASS | | | |
| FINISH | | DRN BY | DATE |
| MATTE TIN PLATE | | BOONE | 9.25.95 |
| | | APP'D | SCALE |
| | | LN | 5X |
| TOLERANCES | INCH [MM] | CODE | DWG NO. |
| DECIMAL | ± .005 [± 0.15] | C | 1211 |
| ANGULAR | ± 1° | | |
| UNLESS OTHERWISE SPECIFIED | | | |